



8 Jul 2009

Portfolio & Index Strategy

Asia Pacific Listed Exchange Traded Funds – Liquidity Trends

Data in this publication is as of Jul 6th 2009.

All figures in this report are in USD.

ETF Liquidity Trends

Market Overview

There are 180 equity based ETFs in the Asia Pacific region with 224 listings across 12 countries and 15 exchanges. Japan has the largest market share by AUM accounting for 45.42% of the whole market, whilst China has the largest market share by turnover with 44.94%.

db x-trackers cross-listed one country ETF on the Hong Kong Stock Exchange in the previous week. (See page 2 for further details)

Turnover

Monthly average daily turnover remained at about the same level in the last week. Turnover for the previous week was USD 806m. The largest ETF by turnover was the China 50 ETF issued by China Asset Management with USD 247m accounting for 30.6% of total turnover.

Assets Under Management

AUM declined 1.4% in the previous week. AUM as of Jul 6th were USD 54.2bn. The largest ETF by AUM is the TOPIX ETF, managed by Nomura Asset Management, with AUM of USD 6.8bn.

Contributors

Shan Lan

Vice President
Index Research
(+1) 212 250 2776
shan.lan@db.com

Aram Flores

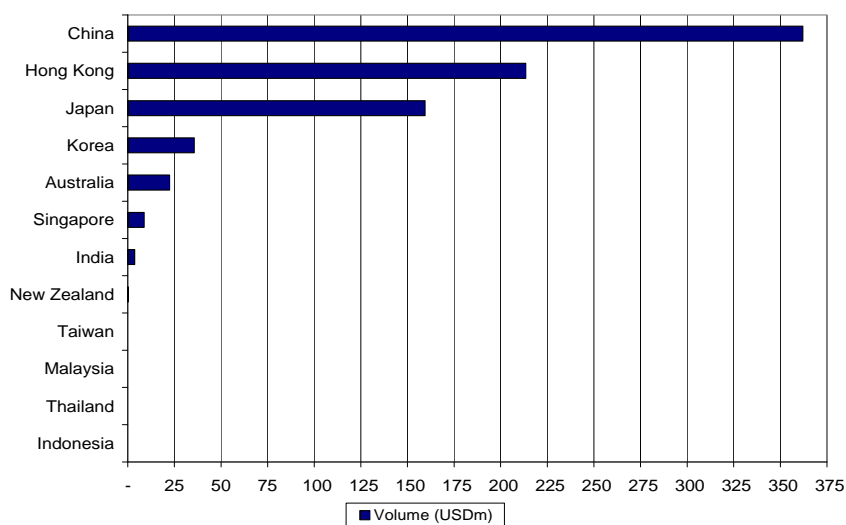
Managing Director
Index Research
(+1) 212 250 0630
aram.flores@db.com

Contact

Asad Syed

Director
Asia Equity Derivatives Strategy
(852) 2203 6786
asad.syed@db.com

Figure 1: ETF turnover (USDm) by country



Source: Deutsche Bank, Bloomberg, Reuters.

Deutsche Bank Securities Inc.

Deutsche Bank does and seeks to do business with companies covered in its research reports. Thus, investors should be aware that the firm may have a conflict of interest that could affect the objectivity of this report. Investors should consider this report as only a single factor in making their investment decision. DISCLOSURES AND ANALYST CERTIFICATIONS ARE LOCATED IN APPENDIX 1. MICA(P) 106/05/2009.

ETF Statistics

Contents	
ETF Statistics	2
Turnover - Equity related	4
AUM – Equity related	6
ETF Statistics by Issuer	9
Appendix - List of ETFs with BBG/Reuters codes	11
Useful Information	25

Figure 2: ETF Summary Statistics

	#ETFs	#Listings	TO (USDm)	AUM (USDm)
Equity ETFs				
Country	112	151	796.22	51,414.25
Sector	63	67	8.84	2,601.52
Style	5	6	0.48	229.52
Total Equity	180	224	805.54	54,245.30
Other ETFs				
Bond	5	6	0.18	2,297.53
Commodity	14	19	9.68	960.71
Currency	3	3	0.09	31.79
Other Total	22	28	9.95	3,290.04
Total Asian Listed ETFs	202	252	815.49	57,535.34

Source: Deutsche Bank, Bloomberg, Reuters.

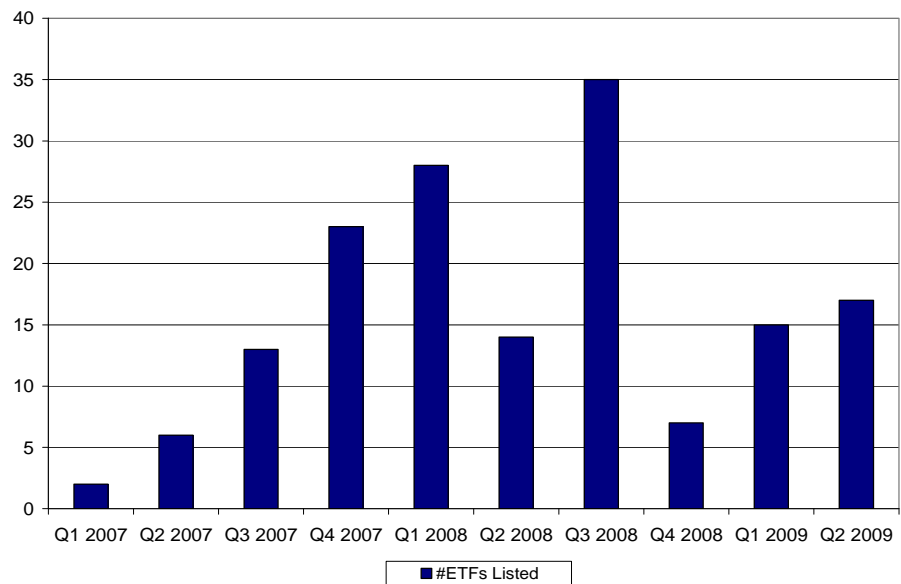
Data related to non Equity based ETFs displayed on Figure 2 is provided only for informational purposes and it is not included in the figures and tables throughout this report.

Sources

Assets under Management -
Bloomberg / Price and volume used to calculate turnover -
Reuters

Volume is daily average exchange reported volume. Daily average calculated using 22 day average,

Figure 3: ETF's New Listings



Source: Deutsche Bank, Bloomberg, Reuters.

Figure 4: ETFs Listed in the past week

ETF Name	Issuer	Exchange	Bloomberg	Reuters	TER
db x-trackers MSCI Taiwan TRN Index	db x-trackers	Hong Kong	3036 HK	3036.HK	0.65%

Source: Deutsche Bank, Bloomberg, Reuters. (TER: Total Expense Ratio)

Figure 5: ETF Summary by Country

Country	#ETFs	#Listings	TO (USDm)	Mkt Share (TO)	AUM (USDm)	Mkt Share (AUM)
Australia	4	25	22.39	2.78%	1,324.44	2.44%
China	5	5	362.01	44.94%	4,979.89	9.18%
Hong Kong	20	26	213.46	26.50%	15,218.42	28.05%
India	12	12	3.69	0.46%	1,817.68	3.35%
Indonesia	1	1	0.00	0.00%	0.53	0.00%
Japan	64	65	159.40	19.79%	24,637.81	45.42%
Korea	38	38	35.56	4.41%	1,889.14	3.48%
Malaysia	2	2	0.01	0.00%	221.14	0.41%
New Zealand	6	6	0.24	0.03%	370.87	0.68%
Singapore	15	31	8.76	1.09%	1,815.14	3.35%
Taiwan	11	11	0.02	0.00%	1,904.86	3.51%
Thailand	2	2	0.01	0.00%	65.38	0.12%
Total	180	224	805.54	100.00%	54,245.30	100.00%

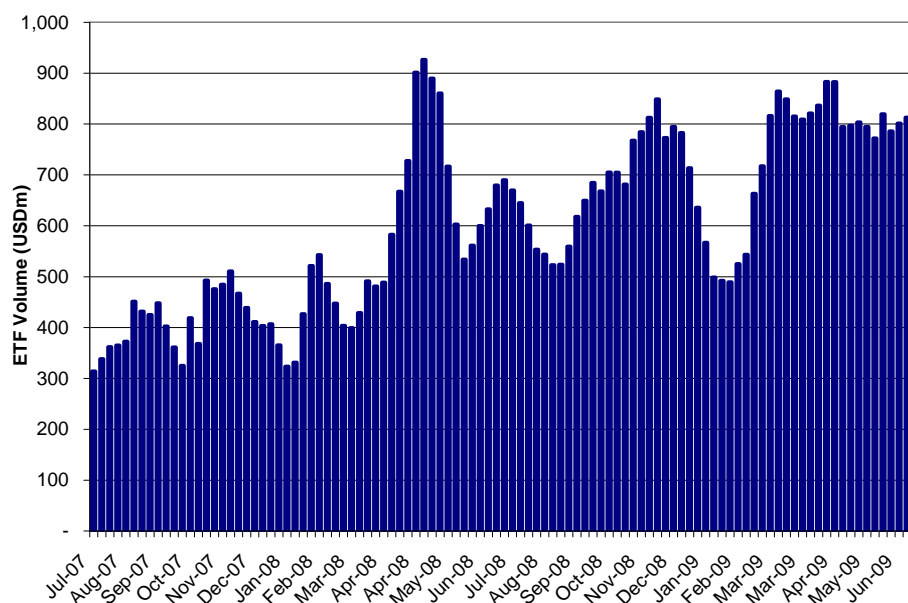
Source: Deutsche Bank, Bloomberg, Reuters

Figure 6: ETF Breakdowns

Country	#ETFs	#Listings	TO(USDm)	AUM(USDm)
Australia	3	21	21.00	1,234.86
China	5	5	362.01	4,979.89
HongKong	19	25	213.44	15,198.45
Indonesia	1	1	0.00	0.53
India	7	7	3.57	767.27
Japan	22	23	151.93	23,499.64
Korea	28	28	35.28	1,809.72
Malaysia	1	1	0.00	53.26
NewZealand	6	6	0.24	370.87
Singapore	14	28	8.73	1,801.72
Thailand	2	2	0.01	65.38
Taiwan	4	4	0.02	1,632.67
Sector				
Australia	1	4	1.38	89.58
HongKong	1	1	0.02	19.98
India	4	4	0.12	1,050.41
Japan	40	40	7.04	1,089.94
Korea	10	10	0.28	79.42
Singapore	0	1	-	-
Taiwan	7	7	0.00	272.19
Style				
Japan	2	2	0.44	48.22
India	1	1	0.00	-
Malaysia	1	1	0.01	167.88
Singapore	1	2	0.03	13.42
Total	180	224	805.54	54,245.30

Source: Deutsche Bank, Bloomberg, Reuters.

Turnover - Equity related ETF

Figure 7: Historic ETF turnover (USDm)


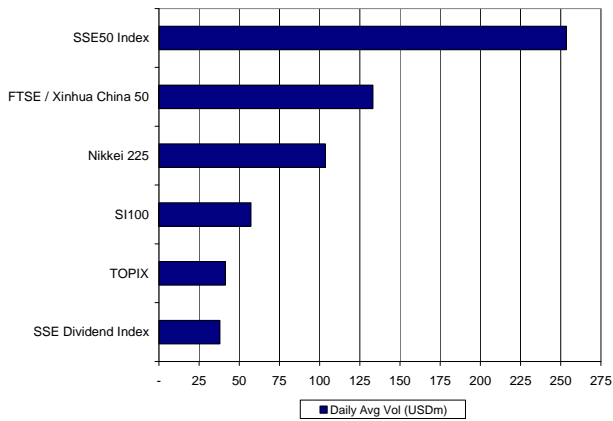
Source: Deutsche Bank, Bloomberg, Reuters.

Figure 8: Top 15 Asian Pacific ETFs by Volume

ETF Name	Issuer	Exchange	TER	Daily Avg Vol (USDm)	
China 50 ETF	China Asset Management	China	Shanghai	0.50%	246.52
iShares Asia Trust - iShares FTSE/Xinhua A50 China Tracker	BGI	Hong Kong	HKE	0.99%	133.14
E Fund SI100 Index Fund	E Fund Management	China	Shenzhen	0.50%	57.28
Nomura Nikkei 225 ETF	Nomura Asset Management	Japan	Osaka	0.22%	56.85
AIG Huatai Dividend ETF	AIG-Huatai Fund Management	China	Shanghai	n.a.	38.03
Tracker Fund of Hong Kong	State Street GA	Hong Kong	HKE	0.05%	30.34
Nikko Exchange Traded Index 225	Nikko Asset Management	Japan	Tokyo SE	0.23%	29.93
Hang Seng H-Share Index ETF	Hang Seng Investment Management	Hong Kong	HKE	1.00%	28.81
TOPIX ETF	Nomura Asset Management	Japan	Tokyo SE	0.22%	24.82
KODEX 200	Samsung Investment Trust Mg	Korea SE	KSE	0.35%	21.76
SPDR200 - SPDRS&P/ASX 200	State Street GA	Australia	ASX	0.29%	17.74
Daiwa ETF - Nikkei 225	Daiwa Asset Management	Japan	Osaka	0.23%	16.50
Shanghai SSE180 Index Fund	Huaan Fund Management	China	Shanghai	0.50%	15.98
WISE - CSI 300 China Tracker	BOCI - Prudential Asset Man Ltd	Hong Kong	HKE	1.39%	9.77
Nikko ETF Topix	Nikko Asset Management	Japan	Tokyo SE	0.11%	9.67

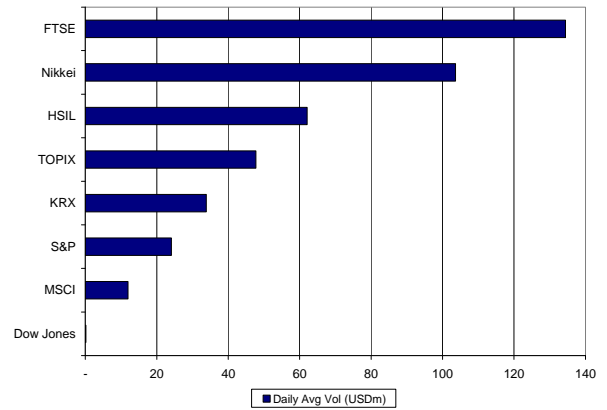
Source: Deutsche Bank, Bloomberg, Reuters.

Figure 8: ETF Turnover by Benchmark Index



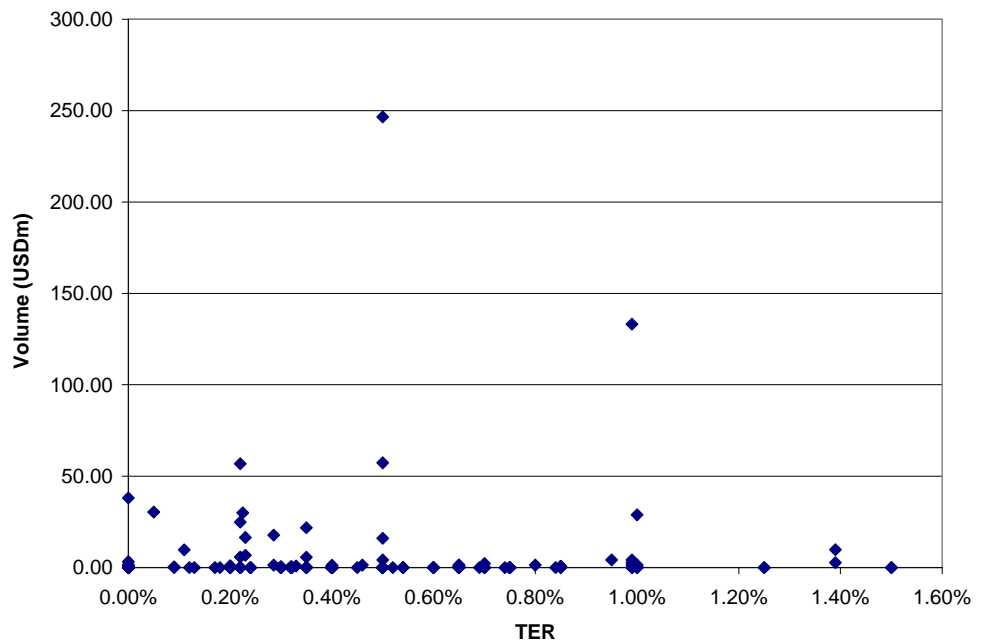
Source: Deutsche Bank, Bloomberg, Reuters.

Figure 9: ETF Turnover by Index Provider



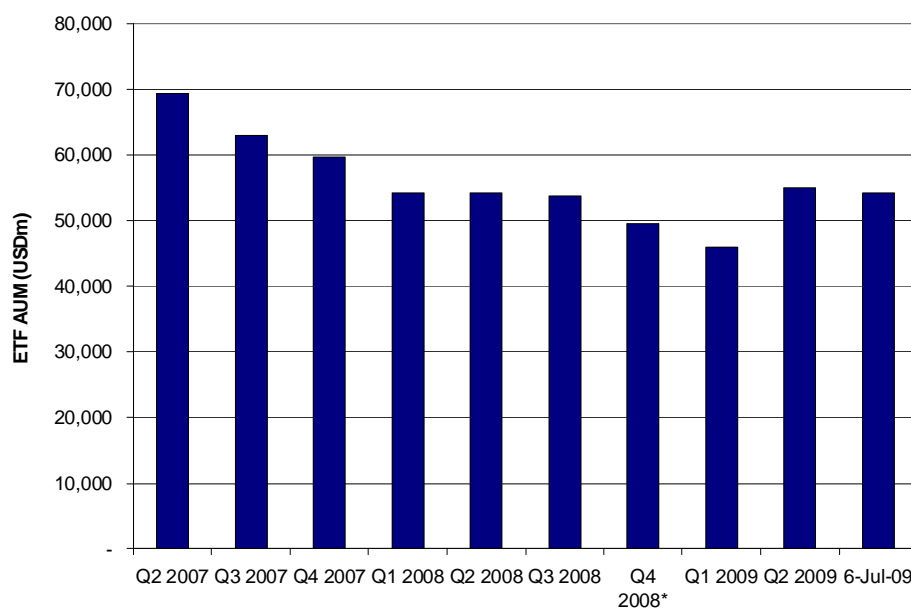
Source: Deutsche Bank, Bloomberg, Reuters.

Figure 10: ETF turnover vs TER



Source: Deutsche Bank, Bloomberg, Reuters..

AUM - Equity related ETF

Figure11: Historic AUM (USDm)


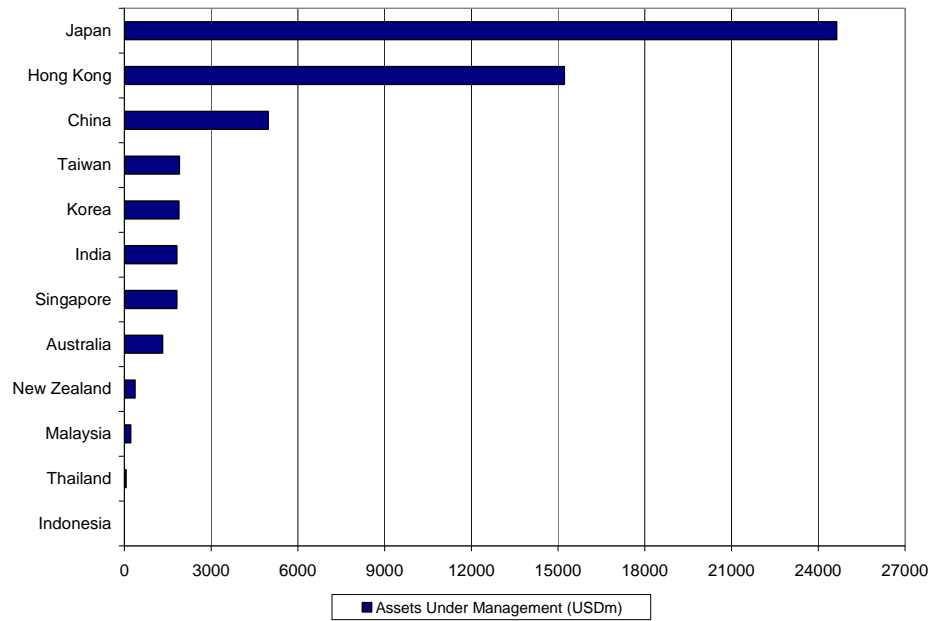
Source: Deutsche Bank, Bloomberg, Reuters. *(Data for Q4 2008 is estimated)

Figure 12: Top 15 Asian Pacific Listed ETFs by AUM

ETF Name	Issuer	Fund Domicile	TER	AUM (USDm)
TOPIX ETF	Nomura Asset Management	Japan	0.22%	6,755.78
Nomura Nikkei 225 ETF	Nomura Asset Management	Japan	0.22%	5,783.99
iShares Asia Trust - iShares FTSE/Xinhua A50 China Tracker	BGI	Hong Kong	0.99%	5,328.00
Tracker Fund of Hong Kong	State Street GA	Hong Kong	0.05%	4,358.16
China 50 ETF	China Asset Management	China	0.50%	3,242.24
Nikko Exchange Traded Index 225	Nikko Asset Management	Japan	0.23%	3,159.43
Hang Seng Index ETF	Hang Seng Investment Management	Hong Kong	1.00%	2,433.17
Daiwa ETF - Nikkei 225	Daiwa Asset Management	Japan	0.23%	2,010.14
Nikko ETF Topix	Nikko Asset Management	Japan	0.11%	1,992.41
Daiwa ETF - Topix	Daiwa Asset Management	Japan	0.23%	1,877.61
Hang Seng H-Share Index ETF	Hang Seng Investment Management	Hong Kong	1.00%	1,616.23
Taiwan Top50 Tracker Fund (TTT)	Polaris Int Sec	Taiwan	0.40%	1,471.50
SPDR200 - SPDRS&P/ASX 200	State Street GA	Australia	0.29%	1,111.54
Bank BeES	Benchmark Asset Management	India	1.00%	1,022.44
WISE - CSI 300 China Tracker	BOCI - Prudential Asset Man Ltd	Hong Kong	1.39%	920.63

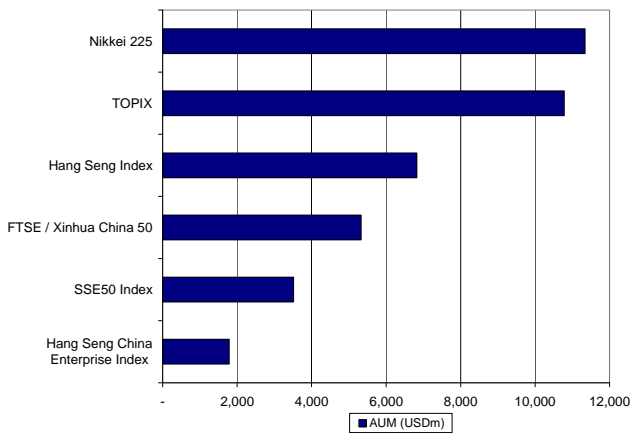
Source: Deutsche Bank, Bloomberg, Reuters.

Figure13: ETF AUM (USDm) by Country



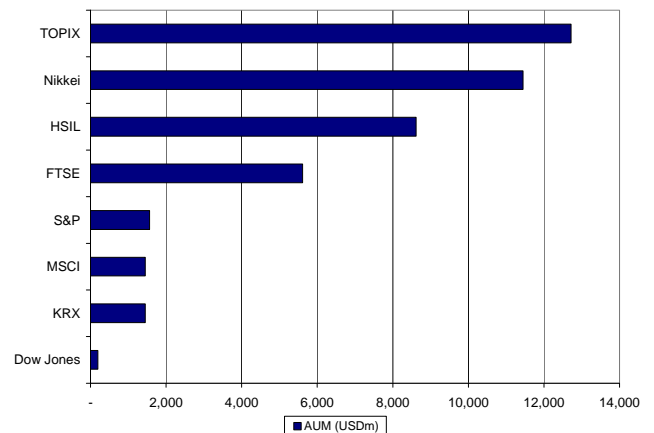
Source: Deutsche Bank, Bloomberg, Reuters.

Figure14: ETF AUM by Benchmark Index



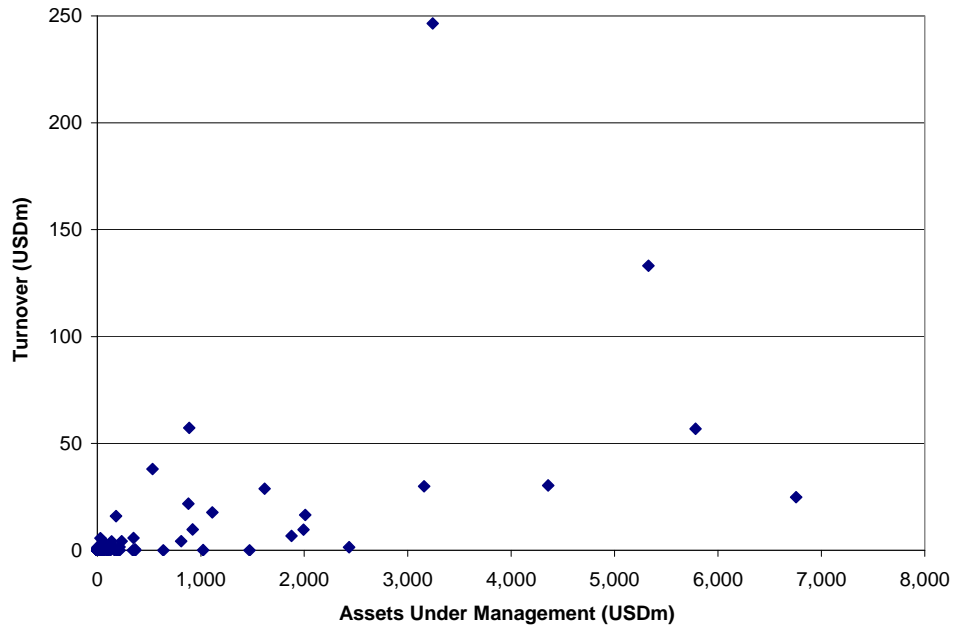
Source: Deutsche Bank, Bloomberg, Reuters.

Figure15: ETF AUM by Index Provider



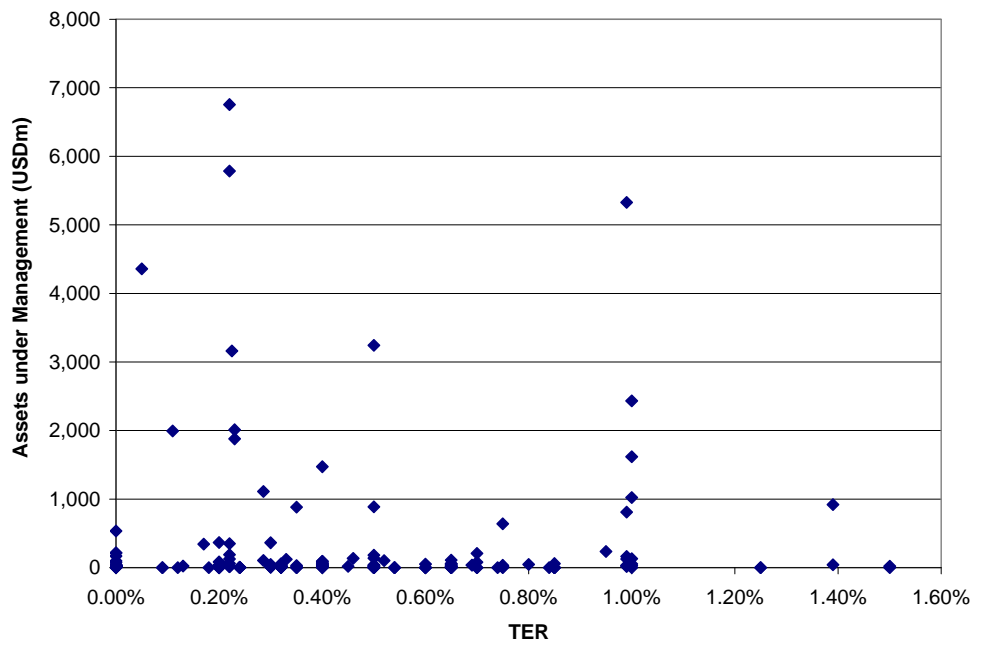
Source: Deutsche Bank, Bloomberg, Reuters.

Figure16: ETF Volume vs AUM (USDm)



Source: Deutsche Bank, Bloomberg, Reuters.

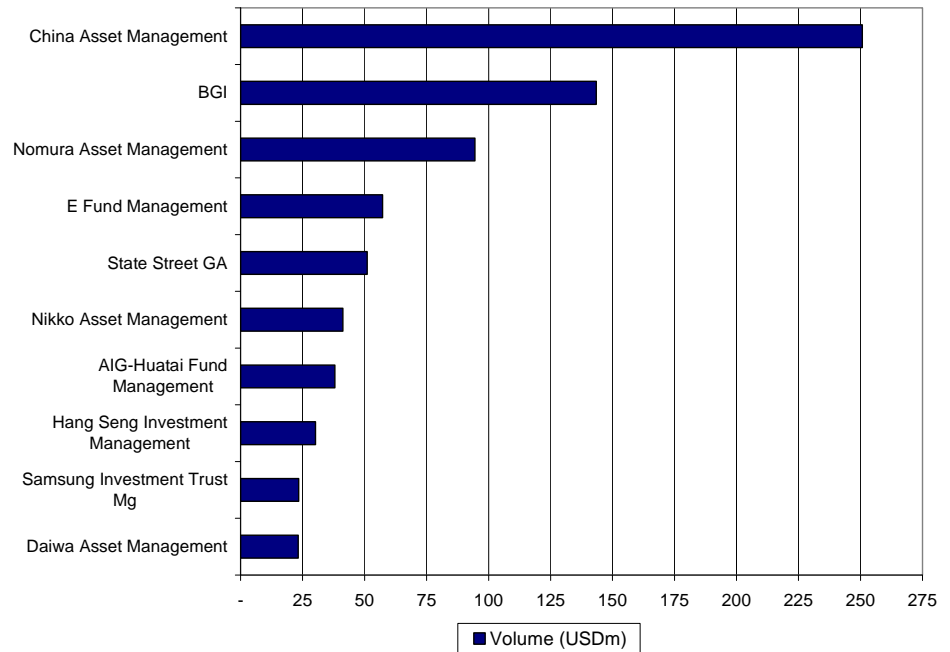
Figure17: ETF fees vs AUM (USDm)



Source: Deutsche Bank, Bloomberg, Reuters.

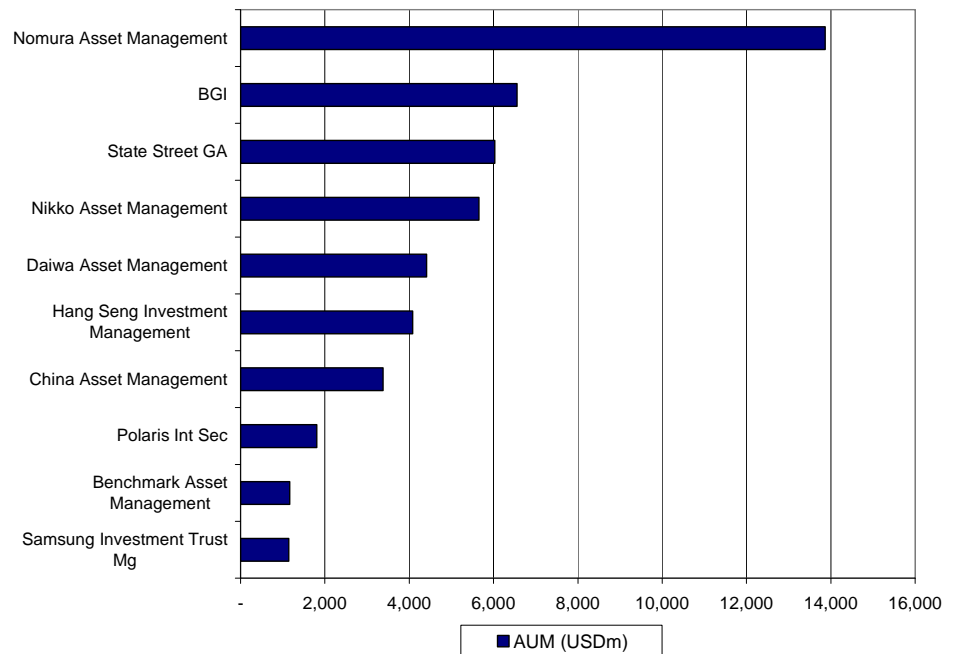
ETF Statistics by Issuer

Figure18: Top 10 Asian Pacific Issuers by Volume



Source: Deutsche Bank, Bloomberg, Reuters.

Figure19: Top 10 Asian Pacific Issuers by AUM



Source: Deutsche Bank, Bloomberg, Reuters.

Figure 20: ETF Issuers Ranked by Daily Average Volume

Issuer	Daily Avg Vol (USDm)	Mkt Share
China Asset Management	250.72	31.15%
BGI	143.37	17.81%
Nomura Asset Management	94.54	11.74%
E Fund Management	57.28	7.12%
State Street GA	51.07	6.34%
Nikko Asset Management	41.22	5.12%
AIG-Huatai Fund Management	38.03	4.72%
Hang Seng Investment Management	30.26	3.76%
Samsung Investment Trust Mg	23.44	2.91%
Daiwa Asset Management	23.24	2.89%
Huaan Fund Management	15.98	1.99%
BOCI - Prudential Asset Man Ltd	12.45	1.55%
Lyxor	5.97	0.74%
Woori Credit Suisse AM	5.67	0.70%
Benchmark Asset Management	3.66	0.45%
Yurie Asset Management	3.22	0.40%
MAPS Investment Man Co	1.61	0.20%
Korea Investment Trust Mg	1.57	0.19%
CIMB-GK Securities Pte Ltd	0.66	0.08%
DBS Asset Management	0.41	0.05%
Smartshares Ltd	0.17	0.02%
db x-trackers	0.14	0.02%
Mitsubishi UFJ Asset Mg	0.10	0.01%
Passive Funds Management Ltd	0.05	0.01%
Tong Yang Investment Trust Mg	0.03	0.00%
KB Asset Management	0.03	0.00%
Polaris Int Sec	0.02	0.00%
Kotak Mahindra Asset Man	0.02	0.00%
AMP	0.02	0.00%
Daishin Investment Trust Mg	0.01	0.00%
One Asset Management	0.01	0.00%
Reliance Capital Asset Management	0.01	0.00%
i-VCAP Management	0.01	0.00%
AmInvestment Services Berhad/Malaysi	0.00	0.00%
Quantum Asset Management	0.00	0.00%
TMB Asset Management	0.00	0.00%
Indo Premier Securities	0.00	0.00%
Prudential ICICI Asset Man	0.00	0.00%
Fubon Securities Investment Trust Co	0.00	0.00%
Unit Trust of India	-	0.00%
Bahana TCW Investment Management	-	0.00%

Source: Deutsche Bank, Bloomberg, Reuters.

Figure 21: ETF Issuers Ranked by AUM

Issuer	AUM (USDm)	Mkt Share
Nomura Asset Management	13,865.56	25.57%
BGI	6,557.78	12.09%
State Street GA	6,026.80	11.11%
Nikko Asset Management	5,656.28	10.43%
Daiwa Asset Management	4,412.00	8.14%
Hang Seng Investment Management	4,078.18	7.52%
China Asset Management	3,379.15	6.23%
Polaris Int Sec	1,806.97	3.33%
Benchmark Asset Management	1,167.33	2.15%
Samsung Investment Trust Mg	1,143.11	2.11%
BOCI - Prudential Asset Man Ltd	976.91	1.80%
E Fund Management	887.40	1.64%
Mitsubishi UFJ Asset Mg	670.41	1.24%
Kotak Mahindra Asset Man	646.74	1.19%
Lyxor	563.52	1.04%
AIG-Huatai Fund Management	533.06	0.98%
Korea Investment Trust Mg	261.08	0.48%
MAPS Investment Man Co	237.11	0.44%
AMP	206.12	0.38%
Huaan Fund Management	180.27	0.33%
i-VCAP Management	167.88	0.31%
CIMB-GK Securities Pte Ltd	131.38	0.24%
Smartshares Ltd	113.55	0.21%
Fubon Securities Investment Trust Co	97.89	0.18%
Yurie Asset Management	84.63	0.16%
Woori Credit Suisse AM	73.24	0.14%
One Asset Management	59.61	0.11%
AmInvestment Services Berhad/Malaysi	53.26	0.10%
Passive Funds Management Ltd	51.19	0.09%
KB Asset Management	49.59	0.09%
DBS Asset Management	37.35	0.07%
Tong Yang Investment Trust Mg	29.04	0.05%
Daishin Investment Trust Mg	11.34	0.02%
TMB Asset Management	5.77	0.01%
Indo Premier Securities	0.53	0.00%
Quantum Asset Management	0.35	0.00%
Prudential ICICI Asset Man	0.33	0.00%
Unit Trust of India	-	0.00%
Bahana TCW Investment Management	-	0.00%
db x-trackers	-	0.00%
Reliance Capital Asset Management	-	0.00%

Source: Deutsche Bank, Bloomberg, Reuters.

Appendix

Asian Pacific Listed ETFs with Reuters/Bloomberg codes

Asian Pacific ETFs

AUM for ETFs cross listed outside the Asia Pacific Region are presented only for informational purposes and have not been included in the previous figures and tables.

Australia

ETF Name	Issuer	Exchange	BBG Code	Reuters Code	TER	Turnover (USDm)	AUM (USDm)	
Country								
SPDR200 - SPDRS&P/ASX200	State Street GA	Australia	ASX	STWAU	STW.AX	0.29%	17.74	1,111.54
SPDR50 - SPDRS&P/ASX50	State Street GA	Australia	ASX	SFYAU	SFY.AX	0.29%	1.31	103.69
Vanguard Australian Shares Index ETF	Vanguard	Australia	ASX	VAS AU	VAS.AX	0.27%	0.51	19.63
Sector								
SPDRS&P/ASX200 Listed Prop	State Street GA	Australia	ASX	SLFAU	SLF.AX	0.40%	1.24	89.58
Cross listed outside Asia Pacific								
iShares S&P Global 100	BGI	Australia	ASX	IOOAU	IOO.AX	0.40%	0.33	594.25
iShares S&P Small Cap 600	BGI	Australia	ASX	IJRAU	IJR.AX	0.20%	0.01	3,823.79
iShares S&P 500	BGI	Australia	ASX	IWAU	IW.AX	0.09%	0.37	17,537.96
iShares S&P Mid Cap 400	BGI	Australia	ASX	IJHAU	IJH.AX	0.20%	0.01	4,454.71
iShares MSCI EAFE	BGI	Australia	ASX	IVEAU	IVE.AX	0.35%	0.30	28,967.48
iShares MSCI Japan	BGI	Australia	ASX	IJPAU	IJP.AX	0.54%	0.04	5,222.72
iShares S&P Europe 350	BGI	Australia	ASX	IEUDA AU	IEUDA.AX	0.60%	0.00	1,380.74
iShares MSCI Emerging Markets	BGI	Australia	ASX	IEMDA AU	IEMDA.AX	0.75%	0.00	28,134.70
iShares MSCI Taiwan	BGI	Australia	ASX	ITWAU	ITW.AX	0.70%	0.02	2,858.64
iShares MSCI South Korea	BGI	Australia	ASX	IKOAU	IKO.AX	0.70%	0.01	1,926.47
iShares FTSE/Xinhua China 25	BGI	Australia	ASX	IZZDA AU	IZZDA.AX	0.74%	0.00	9,870.76
iShares MSCI Hong Kong	BGI	Australia	ASX	IHKAU	IHK.AX	0.54%	0.05	1,760.02
iShares MSCI Singapore	BGI	Australia	ASX	ISGAU	ISG.AX	0.54%	0.01	1,069.40
iShares Russell 2000	BGI	Australia	ASX	IRUAU	IRU.AX	0.20%	0.00	9,201.42
iShares S&P Global Consumer Staples Sector Index Fund	BGI	Australia	ASX	IXI AU	IXI.AX	0.48%	0.01	263.24
iShares S&P Global Healthcare Sector Index Fund	BGI	Australia	ASX	IXJ AU	IXJ.AX	0.48%	0.08	445.59
iShares S&P Global Telecommunications Sector Index Fund	BGI	Australia	ASX	IXP AU	IXP.AX	0.48%	0.05	235.85
iShares S&P Asia 50 Index Fund	BGI	Australia	ASX	IAA AU	IAA.AX	0.50%	0.12	74.13
iShares MSCI BRIC Index Fund	BGI	Australia	ASX	IBK AU	IBK.AX	0.72%	0.14	338.72
Vanguard All-World ex-US Shares Index ETF	Vanguard	Australia	ASX	VEU AU	VEU.AX	0.25%	0.02	3,093.31
Vanguard US Total Market Shares Index ETF	Vanguard	Australia	ASX	VTS AU	VTS.AX	0.07%	0.02	10,024.25
Commodity								
Gold Bullion Securities	ETF Securities Ltd	Australia	ASX	GOLD AU	GOLD.AX	0.39%	2.27	407.26
ETFS Physical Palladium/Australia	ETF Securities Ltd	Australia	ASX	ETPMPDAU	ETPMPD.AX	0.49%	0.00	1.48
ETFS Physical PM Basket/Australia	ETF Securities Ltd	Australia	ASX	ETPMMP AU	ETPMMP.AX	0.43%	0.05	3.30
ETFS Physical Silver/Australia	ETF Securities Ltd	Australia	ASX	ETPMAGAU	ETPMAG.AX	0.49%	0.03	6.60
ETFS Physical Platinum	ETF Securities Ltd	Australia	ASX	ETPMPTAU	ETPMPT.AX	0.49%	0.00	2.08

Source: Deutsche Bank, Bloomberg, Reuters.

Asian Pacific ETFs

China

ETF Name	Issuer	Exchange		BBG Code	Reuters Code	TER	Turnover (USDm)	AUM (USDm)
Country								
China50 ETF	China Asset Management	China	Shanghai	510050.CH	510050.SS	0.50%	246.52	3,242.24
Shanghai SSE180 Index Fund	Huaan Fund Management	China	Shanghai	510180.CH	510180.SS	0.50%	15.98	180.27
EFund S100 Index Fund	EFund Management	China	Shenzhen	159901.CH	159901.SZ	0.50%	57.28	887.40
China SMEETF	China Asset Management	China	Shenzhen	159902.CH	159902.SZ	0.50%	4.19	136.92
AIGHuatai Dividend ETF	AIG-Huatai Fund Management	China	Shanghai	510880.CH	510880.SS	n.a.	38.03	533.06

Source: Deutsche Bank, Bloomberg, Reuters.

Asian Pacific ETFs

AUM for ETFs cross listed outside the Asia Pacific Region are presented only for informational purposes and have not been included in the previous figures and tables.

Hong Kong

ETF Name Country	Issuer	Exchange	BBG Code	Reuters Code	TER	Turnover (USDm)	AUM (USDm)
iSharesAsia Trust - iSharesMSCI China	BGI	Hong Kong	HKE 2801HK	2801.HK	0.99%	2.68	125.12
Tracker Fund of Hong Kong	State Street GA	Hong Kong	HKE 2800 HK	2800.HK	0.05%	30.34	4,358.16
Hang Seng H-Share Index ETF	Hang Seng Investment Management	Hong Kong	HKE 2828 HK	2828.HK	1.00%	28.81	1,616.23
Hang Seng Index ETF	Hang Seng Investment Management	Hong Kong	HKE 2833 HK	2833.HK	1.00%	1.41	2,433.17
iSharesAsia Trust - iSharesFTSE/Xinhua A50 China Tracker	BGI	Hong Kong	HKE 2823 HK	2823.HK	0.99%	133.14	5,328.00
Hang Seng FTSE/Xinhua China 25 Index ETF	Hang Seng Investment Management	Hong Kong	HKE 2838 HK	2838.HK	1.00%	0.05	28.78
iSharesAsia Trust - iSharesBSE Sensex India Tracker	BGI	Hong Kong	HKE 2836 HK	2836.HK	0.99%	1.38	164.31
Lyxor ETF MSCI World	Lyxor	Hong Kong	HKE 2812HK	2812.HK	0.45%	0.01	17.11
Lyxor ETF MSCI AC Asia Pacific ex Japan	Lyxor	Hong Kong	HKE 2815HK	2815.HK	0.65%	0.73	110.34
Lyxor ETF MSCI Korea	Lyxor	Hong Kong	HKE 2813HK	2813.HK	0.65%	0.09	54.02
Lyxor ETF Russia	Lyxor	Hong Kong	HKE 2831HK	2831.HK	0.65%	0.13	22.60
WISE- CSI 300 China Tracker	BOCI - Prudential Asset Man Ltd	Hong Kong	HKE 2827 HK	2827.HK	1.39%	9.77	920.63
WISE- CSI HK 100 Tracker	BOCI - Prudential Asset Man Ltd	Hong Kong	HKE 2825 HK	2825.HK	0.99%	0.00	15.48
Lyxor ETF Japan (TOPIX®)	Lyxor	Hong Kong	HKE 2814HK	2814.HK	0.50%	0.01	39.58
Lyxor ETF MSCI Taiwan	Lyxor	Hong Kong	HKE 2837 HK	2837.HK	0.65%	1.39	59.73
Lyxor ETF MSCI Emerging Markets	Lyxor	Hong Kong	HKE 2820 HK	2820.HK	0.65%	0.03	17.68
Lyxor ETF FTSE RAFI Europe	Lyxor	Hong Kong	HKE 2806 HK	2806.HK	0.75%	0.02	12.37
Lyxor ETF FTSE RAFI US 1000	Lyxor	Hong Kong	HKE 2803 HK	2803.HK	0.75%	0.01	14.79
WISE- SSE 50 China Tracker	BOCI - Prudential Asset Man Ltd	Hong Kong	HKE 3024 HK	3024.HK	1.39%	2.68	40.79
iSharesMSCI Asia APEX50 Index ETF	BGI	Hong Kong	HKE 3010HK	3010.HK	0.69%	0.00	35.24
iSharesMSCI Asia APEX Mid Cap Index ETF	BGI	Hong Kong	HKE 3032 HK	3032.HK	0.69%	0.13	16.00
iSharesMSCI Asia APEX Small Cap Index ETF	BGI	Hong Kong	HKE 3004 HK	3004.HK	0.69%	0.00	10.23
iSharesMSCI Emerging Asia Index ETF	BGI	Hong Kong	HKE 2802 HK	2802.HK	0.69%	0.00	21.75
Sector							
Lyxor ETF Nasdaq 100	Lyxor	Hong Kong	HKE 2826 HK	2826.HK	0.30%	0.02	19.98
Cross listed outside Asia Pacific							
Lyxor ETF MSCI India	Lyxor	Hong Kong	HKE 2810 HK	2810.HK	0.85%	0.63	123.61
SPDR Gold Trust	State Street GA	Hong Kong	HKE 2840 HK	2840.HK	0.40%	0.23	33,290.77
db x-trackers MSCI Taiwan TRN Index ETF	db x-trackers	Hong Kong	HKE 3036 HK	3036.HK	0.65%	0.00	116.09
Bond							
ABF Hong Kong Bond Index Fund	HSBC Inv Funds Ltd/Hong Kong	Hong Kong	HKE 2819 HK	2819.HK	0.15%	0.02	283.09
ABF Pan-Asia Bond Index Fund	State Street GA	Hong Kong	HKE 2821 HK	2821.HK	0.39%	0.14	1,601.95
Commodity							
Lyxor ETF Commodities CRB	Lyxor	Hong Kong	HKE 2809 HK	2809.HK	0.65%	0.78	86.21

Source: Deutsche Bank, Bloomberg, Reuters.

Asian Pacific ETFs

India

ETF Name	Issuer	Exchange	BBG Code	Reuters Code	Turnover (USDm)	AUM (USDm)
Country						
Nifty Exchange Traded Scheme - Nifty BeES	Benchmark Asset Management	India	NSE NBEEES IN	NBES.NS	0.80%	45.30
Junior Nifty BeES	Benchmark Asset Management	India	NSE JBEEES IN	JBES.NS	0.50%	0.78
Prudential ICIC-Sensex Spice	Prudential ICICI Asset Man	India	Bombay ICSPICE IN	SPIF.BO	1.00%	0.33
S&P CNXNifty UTI Notional Depository Receipt - SUNDER	UTI Asset Management	India	NSE SUNDER IN	UTSR.NS	0.40%	2.94
Liquid Benchmark ETF BeES	Benchmark Asset Management	India	NSE LBEEES IN	LBES.NS	0.70%	79.41
Kotak Sensex ETF	Kotak Mahindra Asset Man	India	Bombay KOTS IN	KTMF.BO	0.75%	638.18
Quantum Index Fund	Quantum Asset Management	India	NSE QINDEX IN	QUAN.NS	1.25%	0.35
Sector						
Bank BeES	Benchmark Asset Management	India	NSE BBEEES IN	BBES.NS	1.00%	1,022.44
PSUBank Benchmark ETF	Benchmark Asset Management	India	NSE PSUBBE IN	PSUB.NS	1.50%	19.42
Kotak PSUBank ETF	Kotak Mahindra Asset Man	India	NSE KOPSUB IN	KTPU.NS	0.75%	8.56
Reliance Banking Exchange Traded Fund	Reliance Capital Asset Management	India	NSE RBETFIN	RELB.NS	1.25%	0.01
Style						
Shariah Benchmark Exchange Traded Scheme - Shariah BeES	Benchmark Asset Management	India	NSE SBEEES IN	SBET.NS	1.50%	0.00
Commodity						
UTI Gold Exchange Traded Fund	UTI Asset Management	India	NSE UTIGOL IN	UTGF.NS	1.00%	45.92
Gold BeES	Benchmark Asset Management	India	NSE GBEEES IN	GBES.NS	1.00%	41.18
Kotak Gold ETF	Kotak Mahindra Asset Man	India	NSE KOGOLD IN	KTGF.NS	1.00%	16.42
Reliance Gold Exchange Traded Fund	Reliance Capital Asset Management	India	NSE REGOLD IN	RELE.NS	1.20%	41.31
Quantum Gold Fund	Quantum Asset Management	India	NSE QTGOLD IN	QTGF.NS	1.25%	0.85
SBI Gold Exchange Traded Scheme	SBI Funds Management	India	NSE SGETS IN	SBIG.NS	0.50%	23.34

Source: Deutsche Bank, Bloomberg, Reuters.

Asian Pacific ETFs

Indonesia

ETF Name	Issuer	Exchange		BBG Code	Reuters Code	TER	Turnover (USDm)	AUM (USDm)
Country								
Premier ETF LQ-45 ETF	Indo Premier Securities	Indonesia	Jakarta	R/LQ45XIJ	LQ45X.JK	0.50%	0.00	0.53
Bond								
Bahana Asian Bond Fund	Bahana TCW Investment Management	Indonesia	Jakarta	R/ABFIIJ	ABFII.JK	n.a.	0.00	67.55

Source: Deutsche Bank, Bloomberg, Reuters.

Asian Pacific ETFs

Japan

ETF Name	Issuer	Exchange	BBG Code	Reuters Code	Turnover (USDm)	AUM (USDm)
Nikko ETF Topix	Nikko Asset Management	Japan	Tokyo SE 1308JP	1308.T	0.11%	9.67 1,992.41
Nikko Exchange Traded Index 225	Nikko Asset Management	Japan	Tokyo SE 1330JP	1330.T	0.23%	29.93 3,159.43
TOPIXETF	Nomura Asset Management	Japan	Tokyo SE 1306JP	1306.T	0.22%	24.82 6,755.78
Nomura Nikkei 225 ETF	Nomura Asset Management	Japan	Osaka 1321JP	1321.OS	0.22%	56.85 5,783.99
Nomura Topix Core 30	Nomura Asset Management	Japan	Tokyo SE 1311JP	1311.T	0.22%	0.08 189.30
Daiwa ETF - Topix	Daiwa Asset Management	Japan	Tokyo SE 1305JP	1305.T	0.23%	6.68 1,877.61
Daiwa ETF - Nikkei 225	Daiwa Asset Management	Japan	Osaka 1320JP	1320.OS	0.23%	16.50 2,010.14
Daiwa ETF - Topix Core 30	Daiwa Asset Management	Japan	Tokyo SE 1310JP	1310.T	0.22%	0.02 126.35
iShares Nikkei 225	BGI	Japan	Tokyo SE 1329JP	1329.T	0.30%	0.29 46.97
Nikkei 300 Stock Index Fund	Nomura Asset Management	Japan	Tokyo SE 1319JP	1319.T	0.52%	0.02 102.73
SSE50 Index Linked ETF	Nomura Asset Management	Japan	Osaka 1309JP	1309.OS	0.95%	4.20 235.27
S&P Japan Emerging Equity 100 ETF	Nikko Asset Management	Japan	Tokyo SE 1314JP	1314.T	0.50%	0.04 4.72
Mollp Topix 100 Japan Large Cap Equity	Nikko Asset Management	Japan	Tokyo SE 1316JP	1316.T	0.20%	0.01 366.41
Nikko Topix Mid400 Japan Mid Cap Equity	Nikko Asset Management	Japan	Tokyo SE 1317JP	1317.T	0.50%	0.00 8.46
Nikko Topix Small Japan Small Cap Equity	Nikko Asset Management	Japan	Tokyo SE 1318JP	1318.T	0.50%	0.00 9.35
China A Share Panda CSI300	Nikko Asset Management	Japan	Tokyo SE 1322JP	1322.T	0.20%	1.09 83.71
Next FundsIbovespa Linked ETF	Nomura Asset Management	Japan	Tokyo SE 1325JP	1325.T	n.a.	0.79 41.83
Next FundsFTSE/JSEAfrica Top40 Linked ETF	Nomura Asset Management	Japan	Osaka 1323JP	1323.OS	n.a.	0.14 13.18
Next FundsRussian RTS Linked ETF	Nomura Asset Management	Japan	Osaka 1324JP	1324.OS	n.a.	0.69 21.60
Maxis Topix Core 30 ETF	Mitsubishi UFJ Asset Mg	Japan	Tokyo SE 1344JP	1344.T	n.a.	0.01 213.56
Maxis Nikkei 225 ETF	Mitsubishi UFJ Asset Mg	Japan	Osaka 1346JP	1346.OS	0.17%	0.03 342.52
KODEX200	Samsung Investment Trust Mg	Japan	Tokyo SE 1313JP	1313.T	0.35%	0.02 880.30
MAXIS TOPIXETF	Mitsubishi UFJ Asset Mg	Japan	Tokyo SE 1348JP	1348.T	0.78%	0.06 114.34
Sector						
Nomura Topix Banks	Nomura Asset Management	Japan	Tokyo SE 1615JP	1615.T	0.22%	5.74 349.79
Nomura Topix Elec Appliances	Nomura Asset Management	Japan	Tokyo SE 1613JP	1613.T	0.22%	0.02 13.88
Daiwa ETF - Topix Banks	Daiwa Asset Management	Japan	Tokyo SE 1612JP	1612.T	0.22%	0.03 62.17
Daiwa ETF - Topix Elec Appliances	Daiwa Asset Management	Japan	Tokyo SE 1610JP	1610.T	0.22%	0.00 12.90
Next FundsTopix-17 Energy ResourcesETF	Nomura Asset Management	Japan	Tokyo SE 1618JP	1618.T	0.32%	0.08 4.42
Next FundsTopix-17 FoodsETF	Nomura Asset Management	Japan	Tokyo SE 1617JP	1617.T	0.32%	0.01 14.75
Next FundsTopix-17 Construction & MaterialsETF	Nomura Asset Management	Japan	Tokyo SE 1619JP	1619.T	0.32%	0.01 13.71
Next FundsTopix-17 Retail Trade ETF	Nomura Asset Management	Japan	Tokyo SE 1630JP	1630.T	0.32%	0.00 11.98
Next FundsTopix-17 Steel & Non FerrousETF	Nomura Asset Management	Japan	Tokyo SE 1623JP	1623.T	0.32%	0.05 2.63
Next FundsTopix-17 Automobiles & Transportation Equipment ETF	Nomura Asset Management	Japan	Tokyo SE 1622JP	1622.T	0.32%	0.06 31.33
Next FundsTopix-17 Raw Materials & ChemicalsETF	Nomura Asset Management	Japan	Tokyo SE 1620JP	1620.T	0.32%	0.01 10.18
Next FundsTopix-17 Machinery ETF	Nomura Asset Management	Japan	Tokyo SE 1624JP	1624.T	0.32%	0.01 5.20
Next FundsTopix-17 Commercial & Wholesale Trade ETF	Nomura Asset Management	Japan	Tokyo SE 1629JP	1629.T	0.32%	0.07 3.17
Next FundsTopix-17 Transportation & LogisticsETF	Nomura Asset Management	Japan	Tokyo SE 1628JP	1628.T	0.32%	0.00 22.00
Next FundsTopix-17 Financials(ex Banks) ETF	Nomura Asset Management	Japan	Tokyo SE 1632JP	1632.T	0.32%	0.02 14.75
Next FundsTopix-17 Electric Power & GasETF	Nomura Asset Management	Japan	Tokyo SE 1627JP	1627.T	0.32%	0.03 48.44
Next FundsTopix-17 Pharmaceutical ETF	Nomura Asset Management	Japan	Tokyo SE 1621JP	1621.T	0.32%	0.05 16.17
Next FundsTopix-17 IT & Services, OthersETF	Nomura Asset Management	Japan	Tokyo SE 1626JP	1626.T	0.32%	0.00 31.73
Next FundsTopix-17 Electric Appliances & Precision InstrumentsETF	Nomura Asset Management	Japan	Tokyo SE 1625JP	1625.T	0.32%	0.01 32.71
Next FundsTopix-17 Real Estate ETF	Nomura Asset Management	Japan	Tokyo SE 1633JP	1633.T	0.32%	0.07 3.88
Daiwa ETF - Topix-17 Commercial & Wholesale Trade ETF	Daiwa Asset Management	Japan	Tokyo SE 1646JP	1646.T	n.a.	0.00 13.81
Daiwa ETF - Topix-17 Electric Power & GasETF	Daiwa Asset Management	Japan	Tokyo SE 1644JP	1644.T	n.a.	0.00 16.41
Daiwa ETF - Topix-17 Transportation & LogisticsETF	Daiwa Asset Management	Japan	Tokyo SE 1645JP	1645.T	n.a.	0.00 21.44
Daiwa ETF - Topix-17 Electric Appliances & Precision InstrumentsETF	Daiwa Asset Management	Japan	Tokyo SE 1642JP	1642.T	n.a.	0.00 43.89
Daiwa ETF - Topix-17 IT & Services, OthersETF	Daiwa Asset Management	Japan	Tokyo SE 1643JP	1643.T	n.a.	0.00 30.77
Daiwa ETF - Topix-17 Machinery ETF	Daiwa Asset Management	Japan	Tokyo SE 1641JP	1641.T	n.a.	0.00 13.61
Daiwa ETF - Topix-17 Pharmaceutical ETF	Daiwa Asset Management	Japan	Tokyo SE 1638JP	1638.T	n.a.	0.00 13.65
Daiwa ETF - Topix-17 Steel & NonferrousETF	Daiwa Asset Management	Japan	Tokyo SE 1640JP	1640.T	n.a.	0.00 12.41
Daiwa ETF - Topix-17 BanksETF	Daiwa Asset Management	Japan	Tokyo SE 1648JP	1648.T	n.a.	0.00 30.35
Daiwa ETF - Topix-17 Financials(ex Banks) ETF	Daiwa Asset Management	Japan	Tokyo SE 1649JP	1649.T	n.a.	0.00 14.44
Daiwa ETF - Topix-17 Retail Trade ETF	Daiwa Asset Management	Japan	Tokyo SE 1647JP	1647.T	n.a.	0.00 8.20
Daiwa ETF - Topix-17 Automobiles & Transportation Equipment ETF	Daiwa Asset Management	Japan	Tokyo SE 1639JP	1639.T	n.a.	0.00 30.75
Daiwa ETF - Topix-17 Raw Materials & ChemicalsETF	Daiwa Asset Management	Japan	Tokyo SE 1637JP	1637.T	n.a.	0.00 22.28
Daiwa ETF - Topix-17 Real EstateETF	Daiwa Asset Management	Japan	Tokyo SE 1650JP	1650.T	n.a.	0.00 7.25
Daiwa ETF - Topix-17 FoodsETF	Daiwa Asset Management	Japan	Tokyo SE 1634JP	1634.T	n.a.	0.00 14.00
Daiwa ETF - Topix-17 Energy ResourcesETF	Daiwa Asset Management	Japan	Tokyo SE 1635JP	1635.T	n.a.	0.00 3.58
Daiwa ETF - Topix-17 Construction & MaterialsETF	Daiwa Asset Management	Japan	Tokyo SE 1636JP	1636.T	n.a.	0.00 12.57
Next FundsREIT Index ETF	Nomura Asset Management	Japan	Tokyo SE 1343JP	1343.T	0.32%	0.53 55.95
J-REIT Tokyo Stock Exchange REIT Index - Bi Monthly Dividend	Nikko Asset Management	Japan	Tokyo SE 1345JP	1345.T	n.a.	0.19 14.10

Source: Deutsche Bank, Bloomberg, Reuters.

Asian Pacific ETFs

Japan

ETF Name	Issuer	Exchange		BBG Code	Reuters Code	TER	Turnover (USDm)	AUM (USDm)
Next Funds TOPIX-17 Banks ETF	Nomura Asset Management	Japan	Tokyo SE	1631JP	1631.T	0.32%	0.04	4.65
Style								
Russell/Nomura Small Cap Core Index Linked ETF	Nomura Asset Management	Japan	Osaka	1312JP	1312.OS	0.50%	0.14	30.54
FTSE Japan Green Chip 35	Nikko Asset Management	Japan	Tokyo SE	1347JP	1347.T	0.40%	0.30	17.68
Cross listed outside Asia Pacific								
SPDR Gold Trust	State Street GA	Japan	Tokyo SE	1326JP	1326.T	0.40%	1.83	33,290.77
EasyETF S&P GSCI™ Class A USD Unit	AXA IM / BNP Paribas	Japan	Tokyo SE	1327JP	1327.T	0.45%	0.20	520.60
Bond								
ABF Pan-Asia Bond Index Fund	State Street GA	Japan	Tokyo SE	1349JP	1349.T	0.50%	0.01	0.00
Commodity								
Gold-Price-Linked ETF	Nomura Asset Management	Japan	Osaka	1328JP	1328.OS	0.50%	2.58	263.58
Currency								
Russian Rouble Linked ETF	Nomura Asset Management	Japan	Osaka	1342JP	1342.OS	0.85%	0.01	7.22
Brazilian Real Linked ETF	Nomura Asset Management	Japan	Osaka	1341JP	1341.OS	0.85%	0.04	15.86
Indian Rupee Linked ETF	Nomura Asset Management	Japan	Osaka	1340JP	1340.OS	0.85%	0.04	8.71

Source: Deutsche Bank, Bloomberg, Reuters.

Asian Pacific ETFs

Korea

ETF Name	Issuer	Exchange	BBG Code	Reuters Code	Turnover (USDm)	AUM (USDm)
Country						
KODEX200	Samsung Investment Trust Mg	Korea SE	KSE 069500 KS	069500.KS	0.35%	21.76 880.30
Kospi 200 ETF	Woori Credit Suisse AM	Korea SE	KSE 069660 KS	069660.KS	0.35%	5.64 29.95
Mirae Asset Tiger KRX100 ETF	MAPS Investment Man Co	Korea SE	KSE 091210 KS	091210.KS	0.30%	0.02 8.16
Woori Credit Suisse KOSEF Mid Cap Pure Value ETF	Woori Credit Suisse AM	Korea SE	KSE 097740 KS	097740.KS	0.24%	0.00 2.80
Woori Credit Suisse KOSEF Large Value ETF	Woori Credit Suisse AM	Korea SE	KSE 097730 KS	097730.KS	0.24%	0.00 1.18
Mirae Asset Tiger Pure Value ETF	MAPS Investment Man Co	Korea SE	KSE 097710 KS	097710.KS	n.a.	0.00 7.07
Mirae Tiger Mid Value ETF	MAPS Investment Man Co	Korea SE	KSE 097720 KS	097720.KS	n.a.	0.00 5.52
Yurie TREX Mid Small Cap Value ETF	Yurie Asset Management	Korea SE	KSE 097750 KS	097750.KS	0.30%	0.01 7.37
Samsung KODEX China H ETF	Samsung Investment Trust Mg	Korea SE	KSE 099140 KS	099140.KS	0.33%	0.86 120.93
Woori Credit Suisse KOSEF KRX100 ETF	Woori Credit Suisse AM	Korea SE	KSE 100910 KS	100910.KS	0.13%	0.01 23.32
Samsung Kodex Japan ETF	Samsung Investment Trust Mg	Korea SE	KSE 101280 KS	101280.KS	0.35%	0.03 5.34
Mirae Asset Maps TIGER 200 ETF	MAPS Investment Man Co	Korea SE	KSE 102110 KS	102110.KS	0.46%	1.38 135.90
Samsung Kodex Samsung Group ETF	Samsung Investment Trust Mg	Korea SE	KSE 102780 KS	102780.KS	n.a.	0.65 96.90
Samsung KODEX Brazil ETF	Samsung Investment Trust Mg	Korea SE	KSE 104580 KS	104580.KS	n.a.	0.01 3.70
Woori CS KOSEF Bluechip ETF	Woori Credit Suisse AM	Korea SE	KSE 104520 KS	104520.KS	n.a.	0.00 4.34
Woori CS KOSEF High Dividend ETF	Woori Credit Suisse AM	Korea SE	KSE 104530 KS	104530.KS	n.a.	0.00 3.43
KITM Kindex Samsung Group SW ETF	Korea Investment Trust Mg	Korea SE	KSE 108450 KS	108450.KS	n.a.	0.01 25.18
TongYang First Star Bluechip ETF	Tong Yang Investment Trust Mg	Korea SE	KSE 108630 KS	108630.KS	n.a.	0.03 29.04
Yurie TREX 200 ETF	Yurie Asset Management	Korea SE	KSE 108590 KS	108590.KS	n.a.	3.21 77.26
KStar KOSDAQ Elite 30 ETF	KB Asset Management	Korea SE	KSE 108480 KS	108480.KS	n.a.	0.02 39.14
KITM Kindex KOSDAQ Star ETF	Korea Investment Trust Mg	Korea SE	KSE 108440 KS	108440.KS	n.a.	0.02 12.71
Daishin GIANT Hyundai Motor Group ETF	Daishin Investment Trust Mg	Korea SE	KSE 107560 KS	107560.KS	0.40%	0.01 11.34
KStar Top 5 Group ETF	KB Asset Management	Korea SE	KSE 105780 KS	105780.KS	n.a.	0.01 10.45
Samsung KODEX 15 ETF	Samsung Investment Trust Mg	Korea SE	KSE 105450 KS	105450.KS	n.a.	0.00 5.85
KITM Kindex 200 ETF	Korea Investment Trust Mg	Korea SE	KSE 105190 KS	105190.KS	n.a.	1.54 214.20
KITM Kindex F15 ETF	Korea Investment Trust Mg	Korea SE	KSE 105270 KS	105270.KS	n.a.	0.00 8.99
Mirae Asset Tiger Latin ETF	MAPS Investment Man Co	Korea SE	KSE 105010 KS	105010.KS	n.a.	0.02 12.51
Mirae Asset Tiger BRIC ETF	MAPS Investment Man Co	Korea SE	KSE 105020 KS	105020.KS	n.a.	0.04 26.82
Sector						
Mirae Asset Tiger Semicon ETF	MAPS Investment Man Co	Korea SE	KSE 091230 KS	091230.KS	0.30%	0.01 17.30
Mirae Asset Tiger Banks ETF	MAPS Investment Man Co	Korea SE	KSE 091220 KS	091220.KS	0.30%	0.13 19.29
KOSEF IT ETF	Woori Credit Suisse AM	Korea SE	KSE 091200 KS	091200.KS	0.24%	0.01 5.15
KOSEF Banks ETF	Woori Credit Suisse AM	Korea SE	KSE 091190 KS	091190.KS	0.24%	0.01 3.05
KODEX Autos ETF	Samsung Investment Trust Mg	Korea SE	KSE 091180 KS	091180.KS	0.35%	0.01 4.15
KODEX Banks ETF	Samsung Investment Trust Mg	Korea SE	KSE 091170 KS	091170.KS	0.35%	0.03 4.98
KODEX SemiCon ETF	Samsung Investment Trust Mg	Korea SE	KSE 091160 KS	091160.KS	0.30%	0.02 11.19
Mirae Asset Tiger M&T ETF	MAPS Investment Man Co	Korea SE	KSE 098560 KS	098560.KS	n.a.	0.01 4.54
Samsung KODEX Securities ETF	Samsung Investment Trust Mg	Korea SE	KSE 102970 KS	102970.KS	n.a.	0.03 4.92
Samsung KODEX Shipbuilding ETF	Samsung Investment Trust Mg	Korea SE	KSE 102960 KS	102960.KS	n.a.	0.02 4.86

Source: Deutsche Bank, Bloomberg, Reuters.

Asian Pacific ETFs

Malaysia

ETF Name	Issuer	Exchange	BBG Code	Reuters Code	TER	Turnover (USDm)	AUM (USDm)
Country							
FTSEBursaMalaysia Large 30 Index Fund (FMB30ETF)	AInvestment ServicesBerhad/Malaysi	Malaysia	Kuala Lump FBM30 MK	FBMT.KL	1.00%	0.00	53.26
Style							
MYETF DJ Islamic Market Malaysia Titans25	i-VCAP Management	Malaysia	Kuala Lump DJIM25 MK	DJMT.KL	n.a.	0.01	167.88
Bond							
ABF Malaysia Bond Index Fund	AInvestment ServicesBerhad/Malaysi	Malaysia	Kuala Lump MBIFMK	ABFM.KL	0.16%	0.00	145.15

Source: Deutsche Bank, Bloomberg, Reuters..

Asian Pacific ETFs

New Zealand

ETF Name	Issuer	Exchange		BBG Code	Reuters Code	TER	Turnover (USDm)	AUM (USDm)
SmartMIDZ - Smartshares - NZ Mid Cap Index Fund	SmartsharesLtd	New Zealand	NZ	MDZNZ	MDZ.NZ	0.75%	0.02	22.05
SmartTENZ - Smartshares - NZX10 Index Fund	SmartsharesLtd	New Zealand	NZ	TNZNZ	TNZ.NZ	0.75%	0.06	32.23
AMP Investments' World Index Fund - WINZ	AMP	New Zealand	NZ	WINNZ	WIN.NZ	0.70%	0.02	206.12
SmartOZZY - NZX Australian 20 Leaders Index Fund	Passive Funds Management Ltd	New Zealand	NZ	OZYNZ	OZY.NZ	0.60%	0.05	51.19
SmartMOZY - Smartshares - NZX Australian Midcap Index	SmartsharesLtd	New Zealand	NZ	MZYNZ	MZY.NZ	0.99%	0.02	27.05
SmartFONZ - Smartshares - NZX50 Portfolio IDX	SmartsharesLtd	New Zealand	NZ	FNZNZ	FNZ.NZ	0.99%	0.07	32.22

Source: Deutsche Bank, Bloomberg, Reuters.

Asian Pacific ETFs

AUM for ETFs cross listed outside the Asia Pacific Region are presented only for informational purposes and have not been included in the previous figures and tables.

Singapore

ETF Name	Issuer	Exchange	BBG Code	Reuters Code	TER	Turnover (USDm)	AUM (USDm)	
Country								
StreetTracksStraitstimesIndex Fund	State Street GA	Singapore SE	SGX	STTFSP	STTF.SI	0.30%	0.44	363.84
iSharesMSCI India ETF	BGI	Singapore SE	SGX	INDIA SP	INDI.SI	0.99%	4.21	810.16
CIMB FTSE/ Asean 40 ETF	CIMB-GK SecuritiesPte Ltd	Singapore SE	SGX	ASEAN SP	CFTS.SI	1.00%	0.66	131.38
Lyxor ETF MSCI AC Asia Pacific ex Japan	Lyxor	Singapore SE	SGX	AEJ SP	LAEJ.SI	0.65%	0.51	110.34
Lyxor ETF China Enterprise (HSCEI)	Lyxor	Singapore SE	SGX	ASI SP	LASI.SI	0.65%	0.58	51.93
Lyxor ETF MSCI Korea	Lyxor	Singapore SE	SGX	KRW SP	LKRW.SI	0.65%	0.21	54.02
Lyxor ETF Japan (TOPIX®)	Lyxor	Singapore SE	SGX	JPN SP	LJPN.SI	0.50%	0.04	39.58
Lyxor ETF India (S&P CNXNifty)	Lyxor	Singapore SE	SGX	LNFU SP	LNFU.SI	0.85%	0.72	57.87
Lyxor ETF Hong Kong (HSI)	Lyxor	Singapore SE	SGX	HSI SP	LHSI.SI	0.65%	0.09	34.25
Lyxor ETF MSCI Taiwan	Lyxor	Singapore SE	SGX	TWN SP	LTWN.SI	0.65%	0.23	59.73
LYXOR ETF MSCI Thailand	Lyxor	Singapore SE	SGX	THA SP	LTHA.SI	0.65%	0.04	17.47
Lyxor ETF MSCI Malaysia	Lyxor	Singapore SE	SGX	MAL SP	LML.SI	0.65%	0.00	10.78
LYXOR ETF MSCI ASIA APEX50	Lyxor	Singapore SE	SGX	APEX SP	LAPX.SI	0.60%	0.04	23.03
DBS Singapore STI ETF	DBS Asset Management	Singapore SE	SGX	DBSSTI SP	DSSE.SI	0.20%	0.41	37.35
Lyxor ETF MSCI World	Lyxor	Singapore SE	SGX	WLD SP	LWLD.SI	0.45%	0.00	17.11
Style								
Daiwa FTSE Shariah Japan 100 ETF	Daiwa Asset Management	Singapore SE	SGX	DFSJ SP	DFSJ.SI	0.75%	0.00	13.42
Cross listed outside Asia Pacific								
SPDR	State Street GA	Singapore SE	SGX	SPY SP	SPY.SI	0.12%	0.00	60,218.79
iSharesMSCI Singapore (Free) Index Fund	BGI	Singapore SE	SGX	EWSP	IEWS.SI	0.84%	0.00	1,069.40
Diamonds Trust Series I	State Street GA	Singapore SE	SGX	DIA SP	DIA.SI	0.18%	0.00	6,787.71
iSharesS&P 500 Index Fund	BGI	Singapore SE	SGX	IWSP	IWV.SI	0.09%	0.00	17,537.96
iSharesDJ US Technology Sector Index Fund	BGI	Singapore SE	SGX	IYWSP	IYWT.SI	0.60%	0.00	897.34
SPDR Gold Shares	State Street GA	Singapore SE	SGX	GLD SP	GLD.SI	0.40%	1.02	33,290.77
Lyxor ETF MSCI India	Lyxor	Singapore SE	SGX	INR SP	LINR.SI	0.85%	0.44	123.61
db x-trackers FTSE/ Xinhua China 25 ETF	db x-trackers	Singapore SE	SGX	XX25 SP	DFXI.SI	0.60%	0.01	280.15
db x-trackers MSCI Taiwan TRN Index ETF	db x-trackers	Singapore SE	SGX	XMTW SP	DMTW.SI	0.65%	0.01	116.09
db x-trackers S&P 500 Short ETF	db x-trackers	Singapore SE	SGX	XSPS SP	DSPS.SI	0.50%	0.03	113.94
db x-trackers S&P CNXNifty ETF	db x-trackers	Singapore SE	SGX	XNIF SP	DNIX.SI	0.85%	0.06	122.38
db x-trackers FTSE Vietnam ETF	db x-trackers	Singapore SE	SGX	XFVT SP	DFVT.SI	0.85%	0.02	139.84
Lyxor ETF NASDAQ-100	Lyxor	Singapore SE	SGX	NDX SP	LNDX.SI	0.30%	0.00	142.28
Lyxor ETF Eastern Europe	Lyxor	Singapore SE	SGX	CEC SP	LCEC.SI	0.50%	0.00	235.76
Lyxor ETF MSCI EM Latin America	Lyxor	Singapore SE	SGX	LTM SP	LLTM.SI	0.65%	0.00	229.22
Lyxor ETF MSCI Emerging Markets	Lyxor	Singapore SE	SGX	LEM SP	LLEM.SI	0.65%	0.00	382.14
Bond								
ABF Singapore Bond Index Fund	State Street GA	Singapore SE	SGX	SBIF SP	ABFB.SI	0.15%	0.00	199.79
Commodity								
Lyxor ETF Commodities CRB	Lyxor	Singapore SE	SGX	CRB SP	LCRB.SI	0.35%	0.15	86.21
Lyxor ETF Commodities CRB Non Energy	Lyxor	Singapore SE	SGX	CRN SP	LCRG.SI	0.65%	0.01	21.19

Source: Deutsche Bank, Bloomberg, Reuters.

Asian Pacific ETFs

Taiwan

ETF Name	Issuer	Exchange	BBG Code	Reuters Code	TER	Turnover (USDm)	AUM (USDm)
Country							
Taiwan Top50 Tracker Fund (TTT)	PolarisInt Sec	Taiwan SE	TSEC	0050.TT	0050.TW	0.40%	1,471.50
PolarisTaiwan Mid-Cap 100	PolarisInt Sec	Taiwan SE	TSEC	0051.TT	0051.TW	0.40%	44.38
Polaris/P-SharesS&P Taiwan Custom China Play 50 Fund	PolarisInt Sec	Taiwan SE	TSEC	0054.TT	0054.TW	0.40%	46.49
PolarisPS Taiwan DVEETF	PolarisInt Sec	Taiwan SE	TSEC	0056.TT	0056.TW	0.40%	70.31
Sector							
Fubon Taiwan Tech Tracker	Fubon SecuritiesInvestment Trust Co	Taiwan SE	TSEC	0052.TT	0052.TW	0.40%	33.83
Polaris/P-SharesTaiwan ElectronicsTech Fund	PolarisInt Sec	Taiwan SE	TSEC	0053.TT	0053.TW	0.40%	57.65
Polaris/P-SharesMSCI Taiwan FinancialsFund	PolarisInt Sec	Taiwan SE	TSEC	0055.TT	0055.TW	0.40%	93.22
Fubon Taiwan Eight IndustriesETF	Fubon SecuritiesInvestment Trust Co	Taiwan SE	TSEC	0058.TT	0058.TW	0.40%	13.41
Fubon MSCI Taiwan ETF	Fubon SecuritiesInvestment Trust Co	Taiwan SE	TSEC	0057.TT	0057.TW	0.40%	27.49
Fubon Taiwan Finance ETF	Fubon SecuritiesInvestment Trust Co	Taiwan SE	TSEC	0059.TT	0059.TW	0.40%	23.16
PolarisP-SharesTSEC TWNon-Tech50	PolarisInt Sec	Taiwan SE	TSEC	0060.TT	0060.TW	n.a.	23.43

Source: Deutsche Bank, Bloomberg, Reuters.

Asian Pacific ETFs

Thailand

ETF Name	Issuer	Exchange	BBG Code	Reuters Code	Turnover (USDm)	AUM (USDm)
ThaiDEXSET50 ETF	One Asset Management	ThailandSE SET	TDEXTB	TDEX.BK	0.40%	59.61
Mtrack Energy ETF	TMB Asset Management	ThailandSE SET	ENGYTB	ENGY.BK	n.a.	5.77

Source: Deutsche Bank, Bloomberg, Reuters.

Useful Information

ETF Sponsors and Exchanges

ETF Sponsors

AIG-Huatai Fund Management
 AMP
 BGI
 BOCI - Prudential Asset Man Ltd
 Bahana TCW Investment Management
 Benchmark Asset Management
 CIMB-GK Securities Pte Ltd
 China Asset Management
 Daiwa Asset Management
 E Fund Management
 ETF Securities Ltd
 Fubon Securities Investment Trust Co
 HSBC Inv Funds Ltd/Hong Kong
 HSBC Provident Fund
 Hang Seng Investment Management
 Kotak Mahindra Asset Man
 Lyxor
 Nikko Asset Management
 Nomura Asset Management
 Passive Funds Management Ltd
 Prudential ICICI Asset Man
 Quantum Asset Management
 Reliance Capital Asset Management
 Smartshares Ltd
 State Street GA
 Unit Trust of India
 Yurie Asset Management

Internet Sites

www.aig-huatai.com
www.ampcapital.co.nz
www.barclaysglobal.com
www.boci-pru.com.hk
www.bahana.co.id
www.benchmarkfunds.com
www.cimb.com
www.chinaamc.com
www.daiwa-grp.jp
www.efunds.com.cn
www.etfsecurities.com
investintaiwan.nat.gov.tw
www.assetmanagement.hsbc.com.hk
cplatform.mpfa.org.hk
www.hangseng.com
www.kotakmutual.com
www.lyxoretf.com
www.nikkoam.com
www.nomura-am.co.jp
www.abnamrocraigs.com
www.icicipruamc.com
www.quantumamc.com
www.reliancemutual.com
www.smartshares.nzx.com
www.ssga.com
www.utimf.com
www.yurieasset.co.kr

Exchanges

Australia ASX www.asx.com.au
 China Shenzhen www.szse.cn
 China Shanghai www.sse.com.cn
 Hong Kong HKE www.hkex.com.hk
 India NSE www.nseindia.com
 India Bombay www.bseindia.com
 Indonesia Jakarta www.idx.co.id
 Japan Osaka www.ose.or.jp
 Japan Tokyo SE www.tse.or.jp
 Korea SE KSE www.kse.or.kr
 New Zealand NZ www.nzx.com
 Singapore SE SGX www.sgx.com
 Taiwan SE TSEC www.twse.com.tw

The authors of this report wish to acknowledge the contribution made by Sebastian Campusano, a third party provider to Deutsche Bank of offshore research support services.

Appendix 1

Important Disclosures

Additional information available upon request

For disclosures pertaining to recommendations or estimates made on a security mentioned in this report, please see the most recently published company report or visit our global disclosure look-up page on our website at <http://gm.db.com/ger/disclosure/DisclosureDirectory.eqsr>.

Analyst Certification

The views expressed in this report accurately reflect the personal views of the undersigned lead analyst(s). In addition, the undersigned lead analyst(s) has not and will not receive any compensation for providing a specific recommendation or view in this report. **Aram Flores / Shan Lan**

Equity rating key Equity rating dispersion and banking relationships

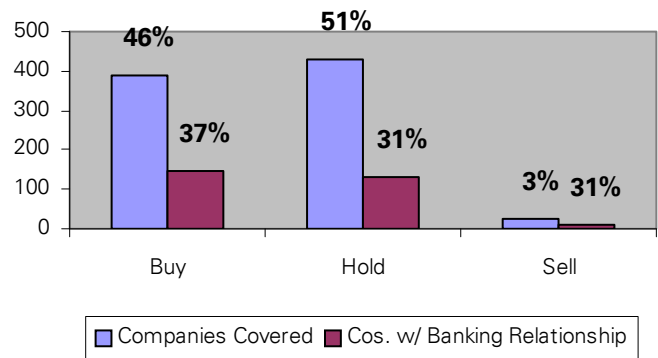
Buy: Based on a current 12-month view of total shareholder return (TSR = percentage change in share price from current price to projected target price plus projected dividend yield), we recommend that investors buy the stock.

Sell: Based on a current 12-month view of total shareholder return, we recommend that investors sell the stock

Hold: We take a neutral view on the stock 12-months out and, based on this time horizon, do not recommend either a Buy or Sell.

Notes:

1. Newly issued research recommendations and target prices always supersede previously published research.
2. Ratings definitions prior to 27 January, 2007 were:
 - Buy: Expected total return (including dividends) of 10% or more over a 12-month period
 - Hold: Expected total return (including dividends) between -10% and 10% over a 12-month period
 - Sell: Expected total return (including dividends) of -10% or worse over a 12-month period



North American Universe

Regulatory Disclosures

1. Important Additional Conflict Disclosures

Aside from within this report, important conflict disclosures can also be found at <https://gm.db.com/equities> under the "Disclosures Lookup" and "Legal" tabs. Investors are strongly encouraged to review this information before investing.

2. Short-Term Trade Ideas

Deutsche Bank equity research analysts sometimes have shorter-term trade ideas (known as SOLAR ideas) that are consistent or inconsistent with Deutsche Bank's existing longer term ratings. These trade ideas can be found at the SOLAR link at <http://gm.db.com>.

3. Country-Specific Disclosures

Australia: This research, and any access to it, is intended only for "wholesale clients" within the meaning of the Australian Corporations Act.

EU countries: Disclosures relating to our obligations under MiFiD can be found at <http://globalmarkets.db.com/riskdisclosures>.

Japan: Disclosures under the Financial Instruments and Exchange Law: Company name - Deutsche Securities Inc. Registration number - Registered as a financial instruments dealer by the Head of the Kanto Local Finance Bureau (Kinsho) No. 117. Member of associations: JSDA, The Financial Futures Association of Japan. Commissions and risks involved in stock transactions - for stock transactions, we charge stock commissions and consumption tax by multiplying the transaction amount by the commission rate agreed with each customer. Stock transactions can lead to losses as a result of share price fluctuations and other factors. Transactions in foreign stocks can lead to additional losses stemming from foreign exchange fluctuations.

New Zealand: This research is not intended for, and should not be given to, "members of the public" within the meaning of the New Zealand Securities Market Act 1988.

Russia: This information, interpretation and opinions submitted herein are not in the context of, and do not constitute, any appraisal or evaluation activity requiring a license in the Russian Federation.

Deutsche Bank Securities Inc.

North American locations

Deutsche Bank Securities Inc.
60 Wall Street
New York, NY 10005
Tel: (212) 250 2500

Deutsche Bank Securities Inc.
225 Franklin Street
25th Floor
Boston, MA 02110
Tel: (617) 988 8600

Deutsche Bank Securities Inc.
222 South Riverside Plaza
30th Floor
Chicago, IL 60606
Tel: (312) 537-3758

Deutsche Bank Securities Inc.
3033 East First Avenue
Suite 303, Third Floor
Denver, CO 80206
Tel: (303) 394 6800

Deutsche Bank Securities Inc.
1735 Market Street
24th Floor
Philadelphia, PA 19103
Tel: (215) 854 1546

Deutsche Bank Securities Inc.
101 California Street
46th Floor
San Francisco, CA 94111
Tel: (415) 617 2800

Deutsche Bank Securities Inc.
700 Louisiana Street
Houston, TX 77002
Tel: (832) 239-4600

International locations

Deutsche Bank Securities Inc.
60 Wall Street
New York, NY 10005
United States of America
Tel: (1) 212 250 2500

Deutsche Bank AG London
1 Great Winchester Street
London EC2N 2EQ
United Kingdom
Tel: (44) 20 7545 8000

Deutsche Bank AG
Große Gallusstraße 10-14
60272 Frankfurt am Main
Germany
Tel: (49) 69 910 00

Deutsche Bank AG
Deutsche Bank Place
Level 16
Corner of Hunter & Phillip Streets
Sydney, NSW 2000
Australia
Tel: (61) 2 8258 1234

Deutsche Bank AG
Level 55
Cheung Kong Center
2 Queen's Road Central
Hong Kong
Tel: (852) 2203 8888

Deutsche Securities Inc.
2-11-1 Nagatacho
Sanno Park Tower
Chiyoda-ku, Tokyo 100-6171
Japan
Tel: (81) 3 5156 6701

Disclaimer

The information and opinions in this report were prepared by Deutsche Bank AG or one of its affiliates (collectively "Deutsche Bank"). The information herein is believed to be reliable and has been obtained from public sources believed to be reliable. Deutsche Bank makes no representation as to the accuracy or completeness of such information.

Deutsche Bank may (1) engage in securities transactions in a manner inconsistent with this research report, (2) with respect to securities covered by this report, sell to or buy from customers on a principal basis, and (3) consider this report in deciding to trade on a proprietary basis.

Opinions, estimates and projections in this report constitute the current judgment of the author as of the date of this report. They do not necessarily reflect the opinions of Deutsche Bank and are subject to change without notice. Deutsche Bank has no obligation to update, modify or amend this report or to otherwise notify a recipient thereof in the event that any opinion, forecast or estimate set forth herein, changes or subsequently becomes inaccurate. Prices and availability of financial instruments are subject to change without notice. This report is provided for informational purposes only. It is not an offer or a solicitation of an offer to buy or sell any financial instruments or to participate in any particular trading strategy.

The financial instruments discussed in this report may not be suitable for all investors and investors must make their own informed investment decisions. Stock transactions can lead to losses as a result of price fluctuations and other factors. If a financial instrument is denominated in a currency other than an investor's currency, a change in exchange rates may adversely affect the investment.

All prices are those current at the end of the previous trading session unless otherwise indicated. Prices are sourced from local exchanges via Reuters, Bloomberg and other vendors. Data is sourced from Deutsche Bank and subject companies.

Past performance is not necessarily indicative of future results.

Derivative transactions involve numerous risks including, among others, market, counterparty default and illiquidity risk. The appropriateness or otherwise of these products for use by investors is dependent on the investors' own circumstances including their tax position, their regulatory environment and the nature of their other assets and liabilities and as such investors should take expert legal and financial advice before entering into any transaction similar to or inspired by the contents of this publication. Trading in options involves risk and is not suitable for all investors. Prior to buying or selling an option investors must review the "Characteristics and Risks of Standardized Options," at <http://www.optionsclearing.com/publications/risks/riskchap1.jsp>. If you are unable to access the website please contact Deutsche Bank AG at +1 (212) 250-7994, for a copy of this important document.

The risk of loss in futures trading, foreign or domestic, can be substantial. As a result of the high degree of leverage obtainable in futures trading, losses may be incurred that are greater than the amount of funds initially deposited.

Unless governing law provides otherwise, all transactions should be executed through the Deutsche Bank entity in the investor's home jurisdiction. In the U.S. this report is approved and/or distributed by Deutsche Bank Securities Inc., a member of the NYSE, the NASD, NFA and SIPC. In Germany this report is approved and/or communicated by Deutsche Bank AG Frankfurt authorized by the BaFin. In the United Kingdom this report is approved and/or communicated by Deutsche Bank AG London, a member of the London Stock Exchange and regulated by the Financial Services Authority for the conduct of investment business in the UK and authorized by the BaFin. This report is distributed in Hong Kong by Deutsche Bank AG, Hong Kong Branch, in Korea by Deutsche Securities Korea Co. and in Singapore by Deutsche Bank AG, Singapore Branch. In Japan this report is approved and/or distributed by Deutsche Securities Inc. The information contained in this report does not constitute the provision of investment advice. In Australia, retail clients should obtain a copy of a Product Disclosure Statement (PDS) relating to any financial product referred to in this report and consider the PDS before making any decision about whether to acquire the product. Deutsche Bank AG Johannesburg is incorporated in the Federal Republic of Germany (Branch Register Number in South Africa: 1998/003298/10). Additional information relative to securities, other financial products or issuers discussed in this report is available upon request. This report may not be reproduced, distributed or published by any person for any purpose without Deutsche Bank's prior written consent. Please cite source when quoting.

Copyright © 2009 Deutsche Bank AG